

USB Image Uploader Software Instruction

1. **Software Version:** 1.0
2. **Computer Configuration Requirement And Hardware Connection**
 - I. **Hardware Configuration Requirement:**

An USB socket (an USB interface in computer)(shown in Figure 1).



Figure 1 USB socket in computer

- II. **Software Configuration Requirement:**

One of the Windows98, windows 2000 Professional and Windows XP operating system is needed in your computer.

- III. **Hardware Connection**

An USB cable :

One side : a Series “A” plug (shown in Figure 2), connect to USB socket in computer (shown in Figure 1);



Figure 2 Series “A” plug

Another side : a Series “B” plug (shown in Figure 3), connect to USB socket in B mode ultrasound (shown in Figure 4).

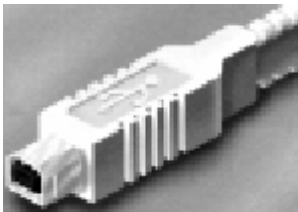


Figure 3 Series “B” plug

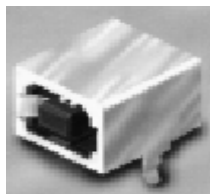


Figure 4 USB socket in B mode ultrasound

3. **Install And Uninstall The Driver**

- I. **Installation Instruction**

- **Step 1** save the following files to your computer: [secbulk.inf](#), [secbulk.sys](#) and [setup.exe](#).
- **Step 2**, connect your computer with ultrasound scanner with an USB cable. , Switch on your computer and ultrasound scanner, You computer will recognize the ultrasound scanner by prompting “[USB Device found](#)”. (Once the driver have already installed successfully, you needn’t to install it later)
- **Step3**, When the dialog box indicate ” [search the driver file](#)”, choose the file named “[secbulk.inf](#)” and file

named “**secbulk.sys**” that you’ve saved to your computer. After finding these file, you click button OK, then

- your computer will complete the installation automatically..
- **Step 4** Click on the **setup.exe** to install the software: **Image Uploader** to your computer. After installation, start Image Uploader by pressing down: Start/Program File/ Image Uploader. Now you can transfer image to your computer from ultrasound now. Pls **Freeze** any image on the ultrasound scanner, and then choose the Menu: USB/Receive in Image Uploader, a image will be transferredto your Computer.

II. Examine

- Select **【start】 / 【set】 / 【control panel】 / 【system】 / 【hardware】 / 【device manager】** , click button **【device manager】** , if you can find “**SEC SOC Test Board**” under the list of **Universal Serial Bus Control**, then the driver install successfully.

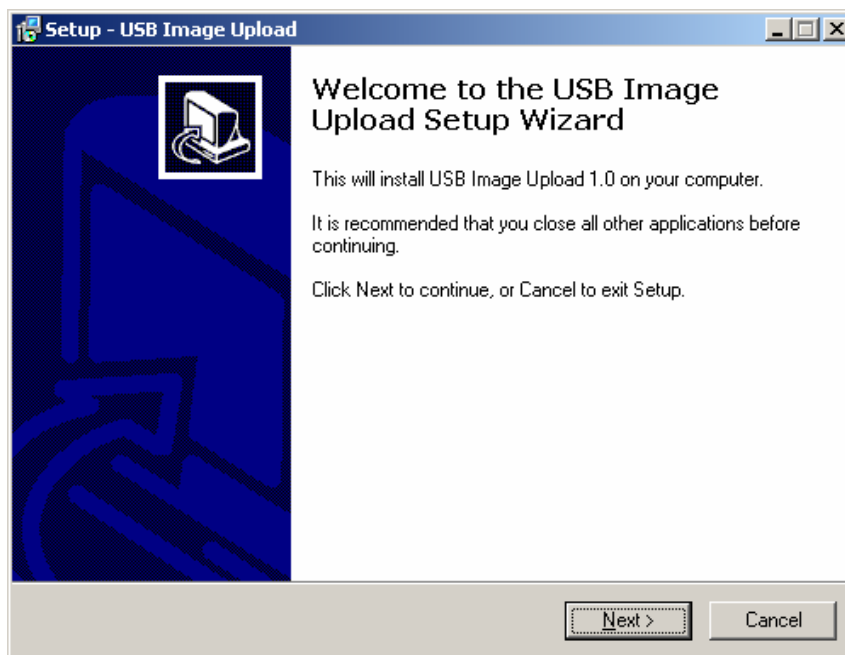
III. Uninstall Instruction

- Search the files named “secbulk.inf” and “secbulk.sys” , and delete these files, so the driver is uninstalled.

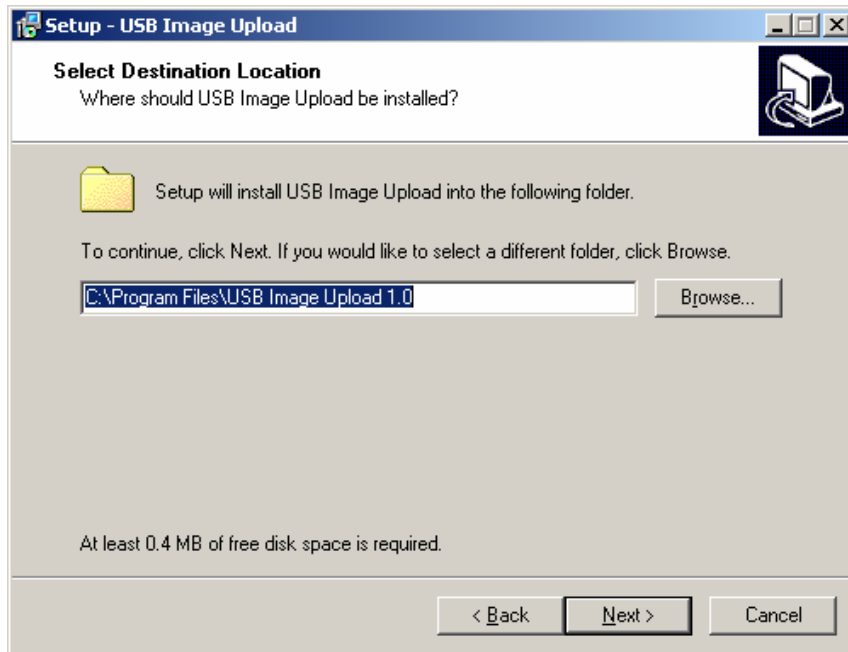
4. Install, Uninstall And Launch The Software

I. Installation Instruction:

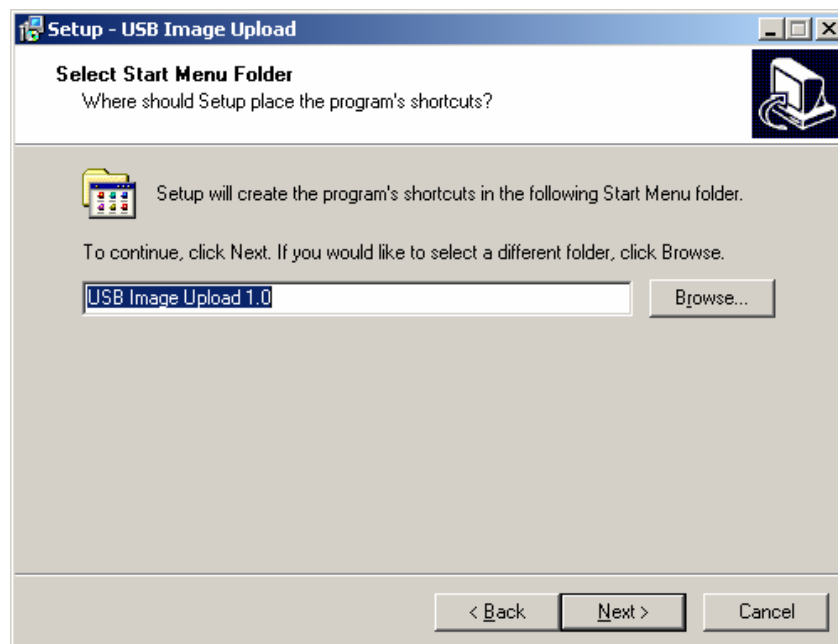
- Firstly startup computer , and choose the file: **setup.exe** that you’ve saved to your computer, double click **Setup**.
- Click “Next”;



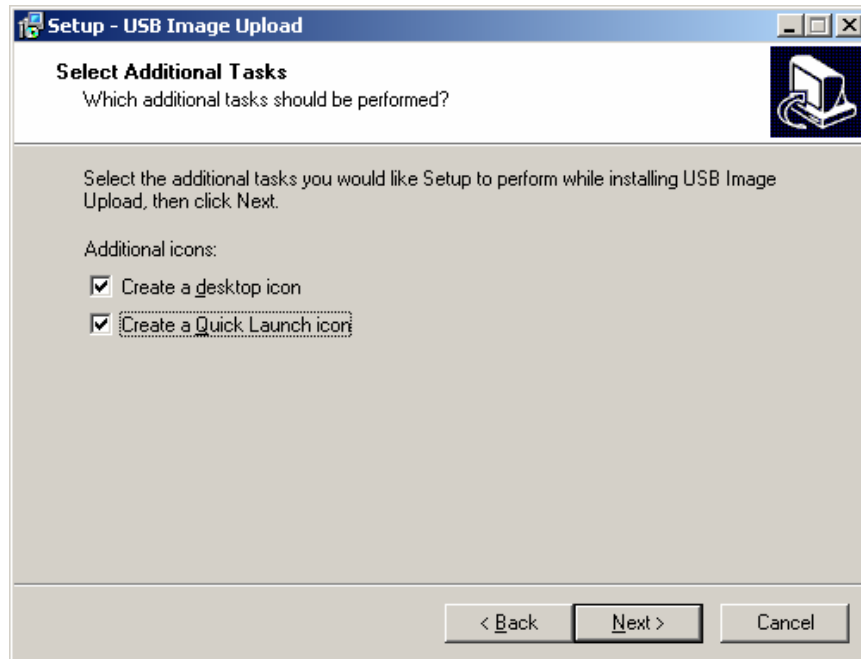
- Select destination location, click “Next”, if you would like to select a different folder ,click “Browse”;



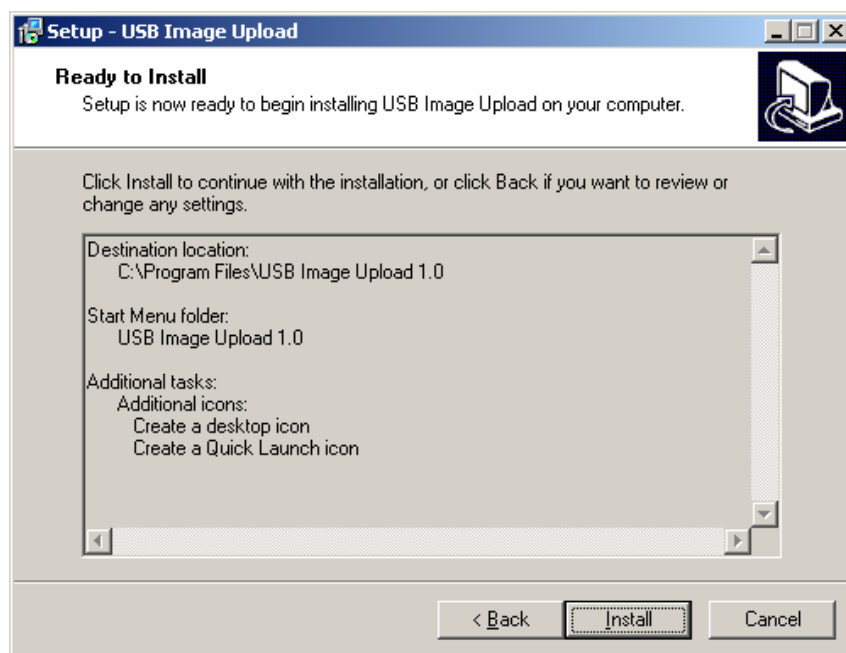
- Select start menu folder, click “Next”, if you would like to select a different folder ,click “Browse”;



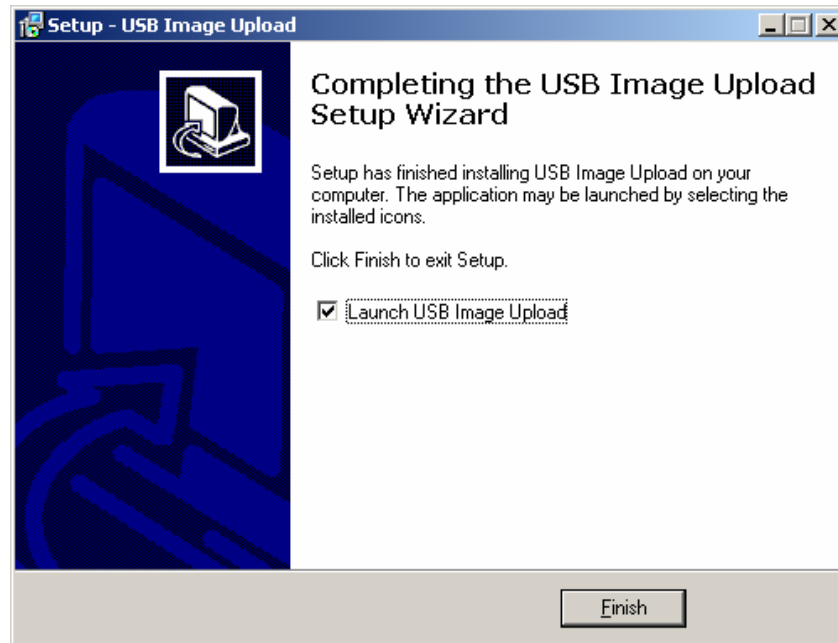
- Create a desktop icon and a quick launch icon, then click “Next”;



- Click "Install";



- Click "Finish", if you would like to launch the program ,click "Launch USB Image Upload";



II. Uninstall Instruction:

Method one:

- Firstly click menu **【start】 / 【program】 / 【USB Image Upload 1.0】 / 【Uninstall USB Image Upload】** .
- Secondly finish the uninstall of software according to the hint.

Method two:

- Firstly click menu **【start】 / 【set】 / 【control panel】** .
- Secondly double click **【add/remove program】** in control panel.
- Thirdly select **USB Image Upload** in the pop-up dialog box, then click button **【add/remove】** to startup the software uninstall. The system will do what you want automatically. All you need to do is waiting.

III. Launch The Software

You can launch the software in three ways:

- **The first one:**
In interface of the Windows, select **【start】 / 【program】 / 【USB Image Upload 1.0】 / 【USB Image Upload】** .
- **The second one:**
Double click the shortcut icon **【USB Image Upload】** on the desktop.
- **The third one:**
Click the shortcut icon named **USB Image Upload** in taskbar.

5. Main Function

I. Display The Connected State From Computer To B Mode Ultrasound :

After running this software, there is a pop-up window ,whose title bar will display “connect success” or “connect fail” .

II. Upload The Image:

Click **【USB】 / 【Receive】** in menu or button “**R**” in toolbar to start transferring image when the image in B mode ultrasound is frozen. Progress bar in status bar will show the progress of transferring. End transferring the image, a pop-up dialog box will indicate saving the image. If you



SHENZHEN BONDWAY ELECTRONICS CO., LTD.

want to save it, you can input saving path and file name, and click button **Save**, otherwise click button **Cancel** to exit.

III. Display Image:

Click **【File】 / 【Open】** in menu or open button in toolbar ,and then a pop-up dialog box will indicate opening an BMP image transferred from B mode ultrasound to computer. When you input the path and file name , the image will be displayed in display region of software.

6. Notice

- This software is only used to upload the image of our company's B mode ultrasound to the computer.
- This software will work perfectly in Windows98, Windows 2000 Professional and Windows XP operating system, but in other operation system we can't guarantee it can work correctly.
- Make sure that USB cable is plugged steady after B mode ultrasound completing startup.
- Make sure the image in B mode ultrasound is frozen before transfer, otherwise the computer will pop-up error dialog box after a moment.
- We strongly suggest you not to pull out the USB cable during transferring image.
- We strongly suggest you not to close the software during transferring image.

7. Attention:

We won't send another attention if this Image Uploader Software Instruction is changed. If you have another problem please connect us.