

BW520V

Digital Palmtop VET Ultrasound Scanner

Technical Parameter

- Grey scale: 256
- 6.4" LCD display
- Main Power supply: 100 – 240V, Frequency: 50 – 60Hz
- Power consumption: $\leq 40\text{VA}$
- Main unit size: approx. 326 x 162 x 47mm (L x H x D)
- Main unit weight: approx 1.5kg (excluding accessories)



Primary Functions

- Display mode: B, B/B, B/M, M, 4B
- M Speed: 1s, 2s, 3s, 4s, 5s, 6s, 7s, 8s
- Magnification: $\times 0.8, \times 1.0, \times 1.2, \times 1.5, \times 1.6, \times 2.0, \times 2.4, \times 3.0$
- Depth enhancement/pan function
- Local zooming
- Adjustment and display of near field, far field, total gain and dynamic range
- Single-point, multi-point focusing
- Frequency conversion
- Angle conversion
- Frame correlation
- Image post processing, gamma correction and edge enhancement
- Image freeze/unfreeze
- Vertical, horizontal flip and B/W conversion
- Pseudo color display
- Patient information, image annotation and auto time display
- 4 kinds of body marks
- Calculation of distance, circumference, area, volume, slope, heart rate and cycle
- Calculation of Bovine, Equine, Ovine, Canine and Feline
- Puncture guide line
- Energy saving
- 100 frames built-in image storage
- 256 frames cine loop
- OB report
- Image transfer to computer by USB interface

Standard Configuration

- Main unit 1PC
- 6.5MHz rectal linear probe 1PC
- One probe connector 1PC
- Pseudo color
- Internal battery 2PCS
- Base 1PC

Optional Parts

- 4.0 MHz rectal convex probe
- 6.5 MHz rectal linear probe (handle)
- 3.5 MHz convex probe
- 5.0 MHz micro-convex probe
- 7.5 MHz high frequency linear probe
- 6.5 MHz transvaginal probe
- USB data line & software
- Thermal printer
- Needle-guided bracket

Optional MULTI-FREQUENCY Probes



6.5MHz rectal Linear Probe 4.0MHz rectal Convex Probe 6.5MHz rectal Linear Probe (handle) 3.5MHz convex Probe 5.0MHz micro-convex Probe 7.5MHz linear Probe



BW520

DIGITAL Palmtop Ultrasound Scanner

BW520V

Digital Palmtop VET Ultrasound Scanner



BONDWAY ELECTRONICS

*Bondway, the very right friend you can rely on
Bondway, your global strategic business partner*



SHENZHEN BONDWAY ELECTRONICS CO., LTD
 ADD: 7C, WEST BLDG, YIHAIGUANGCHANG, CHUANGYE ROAD,
 NANSHAN DIST, SHENZHEN 518054, CHINA
 TEL: 0086-755-86224650 26400367 FAX: 0086-755-26522952
 EMAIL: info@szbondway.com kevinbondway@gmail.com
 WEBSITE: www.szbondway.com

Bondway is a reputed manufacturer from China, dedicated to provide quality medical equipment to the world customers. We are offering a wide variety of medical products for human application and/or VET use, including Ultrasound Scanner, Multiparameter Patient Monitor, Handheld Pulse Oximeter, Vital Sign Monitor, etc. OEM service are also available as per your specific requirement.

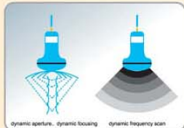
BW520

DIGITAL Palmtop Ultrasound Scanner

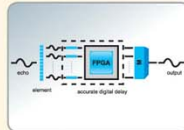


FOR HUMAN

Innovative Technology



Real-time dynamic aperture, dynamic frequency scanning, dynamic filter



Digital beamforming composite

Main Function



Friendly and Easy-to-use



Metallic Suitcase



Easy Handcarry



Multi-socket



Technical Parameter

- Grey scale: 256
- 6.4" LCD display
- Main power supply: 100 ~ 240V, Frequency: 50 ~ 60Hz
- Power consumption: ≤40VA
- Main unit size: approx. 326 × 162 × 47mm (L × H × D)
- Main unit weight: approx. 1.5kg (excluding accessories)

Primary Functions

- Display mode: B, B/B, B/M, M, and 4B
- M Speed: 1s, 2s, 3s, 4s, 5s, 6s, 7s, 8s
- Magnification: × 0.8, × 1.0, × 1.2, × 1.5, × 1.6, × 2.0, × 2.4, × 3.0
- Depth enhancement/pan function
- Local zoom
- Adjustment and display of near field, far field, total gain and dynamic range
- Single-point, multi-point focusing
- Frequency conversion
- Angle conversion
- Frame correlation function
- Gamma correction and edge enhancement for image post-processing
- Image freeze/unfreeze
- Vertical, horizontal flip and B/W reverse
- Case information, image annotation and auto time display
- 64 Kinds of body marks
- Measurement of distance, circumference, area, volume, slope, heart rate and cycle
- Obstetric package including 10 tables, automatic calculation of EDD and fetus weight
- Puncture guide
- Energy saving
- 100 frames built-in image storage
- 256 frames cine loop
- OB report
- PAL-NTSC convertible
- Image transfer to computer by USB interface

Optional MULTI-FREQUENCY Probes



3.5MHz convex probe



5.0MHz micro-convex Probe



6.5MHz transvaginal probe



7.5MHz linear probe

Standard Parts

- | | |
|-----------------------|------|
| ● Main unit | 1PC |
| ● 3.5MHz convex probe | 1PC |
| ● One probe connector | |
| ● Pseudo color | |
| ● Internal battery | 2PCS |
| ● Base | 1PC |

Optional Parts

- 5.0MHz micro-convex probe
- 6.5MHz transvaginal probe
- 7.5MHz high frequency linear probe
- External battery
- Car charger
- View glasses
- Needle-guided bracket
- Thermal printer
- USB data line & software
- Mouse

