

BW530V

DIGITAL VET Ultrasound Scanner

BONDWAY
More Care for your Health

Technical Parameter

- Grey scale: 256
- 10" SVGA display
- Power supply: AC110/230V, Frequency: 50/60Hz
- Main unit size: approx. 400 × 280 × 325mm (L × W × H)
- Main unit weight: approx. 10kg (excluding of accessories)



Primary Functions

- Display mode: B, B/B, B/M, M, 4B
- M Speed: 1s, 2s, 3s, 4s, 5s, 6s, 7s, 8s
- Magnification: ×0.8, ×1.0, ×1.2, ×1.5, ×1.6, ×2.0, ×2.4, ×3.0
- Depth enhancement/pan function
- Local zooming
- Adjustment and display of near field, far field, total gain and dynamic range
- Single-point, multi-point focusing
- Frequency conversion
- Angle conversion
- Frame correlation
- Image post processing, gamma correction and edge enhancement
- Image freeze/unfreeze
- Vertical, horizontal flip and B/W conversion
- Pseudo color display
- Patient information, image annotation and auto time display
- 4 kinds of body marks
- Calculation of distance, circumference, area, volume, slope, heart rate and cycle
- Calculation of Bovine, Equine, Ovine, Canine and Feline
- Puncture guide line
- Energy saving
- 100 frames built-in image storage
- 256 frames cine loop
- OB report
- Image transfer to computer by USB interface

Standard Configuration

- Main unit
- 6.5MHz rectal linear probe
- Pseudo color
- Two probe connectors

Optional Parts

- 4.0 MHz rectal convex probe
- 6.5 MHz rectal linear probe (handle)
- 3.5 MHz convex probe
- 5.0 MHz micro-convex probe
- 7.5 MHz high frequency linear probe
- 6.5 MHz transvaginal probe
- USB data line & software
- Thermal printer
- Needle-guided bracket

Optional MULTI-FREQUENCY Probes



6.5MHz rectal Linear Probe

4.0MHz rectal Convex Probe

6.5MHz rectal Linear Probe (handle)

3.5MHz convex Probe

5.0MHz micro-convex Probe

7.5MHz linear Probe

BW530

DIGITAL Ultrasound Scanner

BW530V

DIGITAL VET Ultrasound Scanner

BONDWAY
ELECTRONICS



*Bondway, the very right friend you can rely on
Bondway, your global strategic business partner*

BONDWAY

SHENZHEN BONDWAY ELECTRONICS CO., LTD

ADD: 7C, WEST BLDG, YIHAIGUANGCHANG, CHUANGYE ROAD,
NANSHAN DIST, SHENZHEN 518054, CHINA

TEL: 0086-755-86224650 26400367 FAX: 0086-755-26522952

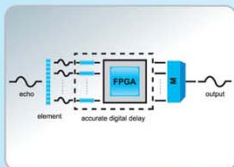
EMAIL: info@szbondway.com kevinbondway@gmail.com

WEBSITE: www.szbondway.com

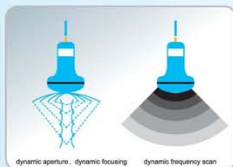
Bondway is a reputed manufacturer from China, dedicated to provide quality medical equipment to the world customers. We are offering a wide variety of medical products for human application and/or VET use, including Ultrasound Scanner, Multiparameter Patient Monitor, Handheld Pulse Oximeter, Vital Sign Monitor, etc. OEM service are also available as per your specific requirement.

We reserve the right to make modifications without prior written notice

Innovative Technology



Digital beaming composite



Real-time dynamic aperture, dynamic frequency scanning, dynamic filter

Main Function



Friendly and Easy-to-use



Technical Parameter

- Scanning mode: linear array scanning, convex array scanning
- Nominal frequency of the probe: 3.5MHz/ 5.0 MHz/ 6.5MHz/ 7.5MHz
- Grey scale: 256
- 10" SVGA display
- Main power supply: AC110/230V, 50/60Hz
- Power consumption: ≤100VA
- Overall dimension for main unit: approx.400 × 280 × 325mm (L × W × H)
- Weight of main unit: approx. 10kg (excluding of accessories)

Primary Functions

- Display mode: B, B/B, B/M, M, and 4B
- M Speed: 1s, 2s, 3s, 4s, 5s, 6s, 7s, 8s
- Magnification: × 0.8, × 1.0, × 1.2, × 1.5, × 1.6, × 2.0, × 2.4, × 3.0
- Depth enhancement/pan function
- Local zoom
- 8 stages TGC adjustment
- Single-point, multi-point
- Frequency conversion
- Angle conversion
- Frame correlation function
- Gamma correction and edge enhancement for image after-processing
- Image freeze/unfreeze
- Vertical, horizontal flip and B/W conversion
- Case information, image annotation and auto time display
- 64 Kinds of body marks
- Measurement of distance, circumference, area, volume, slope, heart rate and cycle
- OB package including 10 tables, automatic calculation of EDD and fetus weight
- Energy saving
- 100 frames image storage
- 256 frames cine loop
- PAL-NTSC switchable
- OB report
- Image transfer to computer by USB interface

Standard Parts

- Main unit 1PC
- 3.5MHz convex probe 1PC
- Two probe connectors
- Pseudo color

Optional Parts

- 5.0MHz micro-convex probe for pediatric
- 6.5MHz transvaginal probe
- 7.5MHz high frequency linear probe
- Trolley
- Thermal printer
- USB data line & software



Optional MULTI-FREQUENCY Probes

