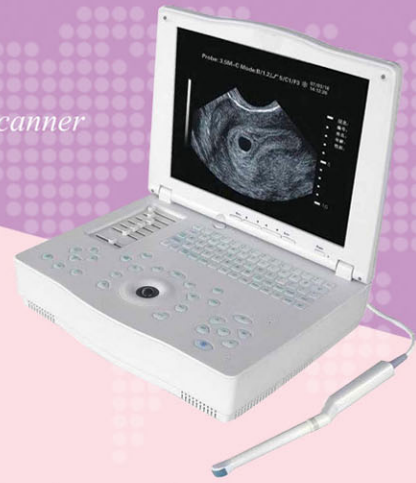


■ BW8H

Laptop Ultrasound Scanner



Application Scope

This device is applicable for the diagnosis of the organs such as liver, gall-bladder, kidney, spleen, pancreas, heart, thyroid gland, breast, uterus, bladder, ovary, etc. It has been widely used in examining abdomen, obstetrics, urology, cardiology, gynecology, small parts, etc in hospital at all level.

Features

- The laptop ultrasound system is ideal for mixed practice, both for bedside use and emergency diagnosis on the spot or under rescue conditions. It is distinguishable by its sharp image quality and a cost-effective solution for home doctor, clinics and hospitals.
- Advanced new technology applied in this unit to obtain a higher-resolution image including dynamic focusing, dynamic logarithm compress, interpolation, Digital Scanning Converter (DSC), Gamma Correction curves, preprocessing and post-processing, etc
- Broadband/multi-frequency convex, linear and transvaginal probes available to obtain quality image in any parts of the patient.
- Wide application for the diagnosis of the organs such as liver, gall-bladder, kidney, spleen, pancreas, heart, thyroid gland, breast, uterus, bladder, ovary, etc. It has been widely used in examining abdomen, obstetrics, urology, cardiology, gynecology, small parts, etc in hospital at all level. Six methods (GS,CRL,BPD,HC,AC,FL) available for the observation and measurement of fetus age and weight, etc.
- In single B mode, the selected area may be enlarged by pressing down the key Zoom and automatically optimized as well.
- Cineloop: up to 186 frames so that the user may select the desired images during its playback.
- Permanent image storage: 64 images could be permanently stored so that typical diseases could be gathered for further study in the future.
- 6-segment slider TGC and overall gain control get the expected quality images in all field
- Backlight silicon rubber keyboard for more convenient operation.
- 15" LCD monitor, flickering-free for better protection over user's eyes.

Technical Specifications

- **Scanning Frequency:** Broadband frequency 2.5MHz-7.5MHz
- **Display Modes:** B, B+B,4B,8B,B+M, M
- **Resolution:** Lateral ≤ 2 , Longitudinal ≤ 1
- **Max. Depth:** 220mm
- **Monitor:** 15" TFT LCD
- **Magnification:** 1.0, 1.2, 1.5, 2.0
- **Image Reversal:** Polarity and Left-Right Reversal
- **Image Processing:** Edge Enhancement, Frame Correlation, Gamma Correction, Histogram
- **Dynamic Imaging:** Variable Aperture, Focus Selectable, Multi-section Dynamic Focusing, Acoustic Lens Focusing
- **BodyMark:** Over 24
- **Pseudo Color Function:** 8 different color options
- **Depth Scroll:** Yes
- **Measurement:** Distance, Circumference, Area, Heart Rate, Slope, Fetal Age, Weight and EDCB.
- **Display:** Time, Date, Patient's ID, Name, Hospital Name, Probe Frequency, Frame Rate and Suggestions of other information
- **Video Output:** PAL, VGA
- **Dimension:** 384 mm(W) \times 300 mm(H) \times 125mm(D)
- **N.W/G.W:** 6.8kg/9kg
- **Standard Configuration:** Main Unit
1.9-5.0MHz Convex Array Probe
Ultrasound Gel
Operation Manual
- **Optional probe:** 1.9-5.0MHz Convex Array Probe
3.5-6.5MHz Hi-frequency convex probe
5.0-7.5MHz linear array probe
5.0-8.0MHz Transvaginal Probe
5.0-8.0MHz Transrectal Probe



SHENZHEN BONDWAY ELECTRONICS CO., LTD

ADD: 7C, WEST BLDG, YIHAIGUANGCHANG, CHUANGYE ROAD, NANSHAN DIST,
SHENZHEN 518054, CHINA

TEL: 0086-755- 86224650-26400367 FAX: 0086-755-26522952 WEB: www.szbondway.com
EMAIL: info@szbondway.com service@szbondway.com kevinlei888@21cn.com